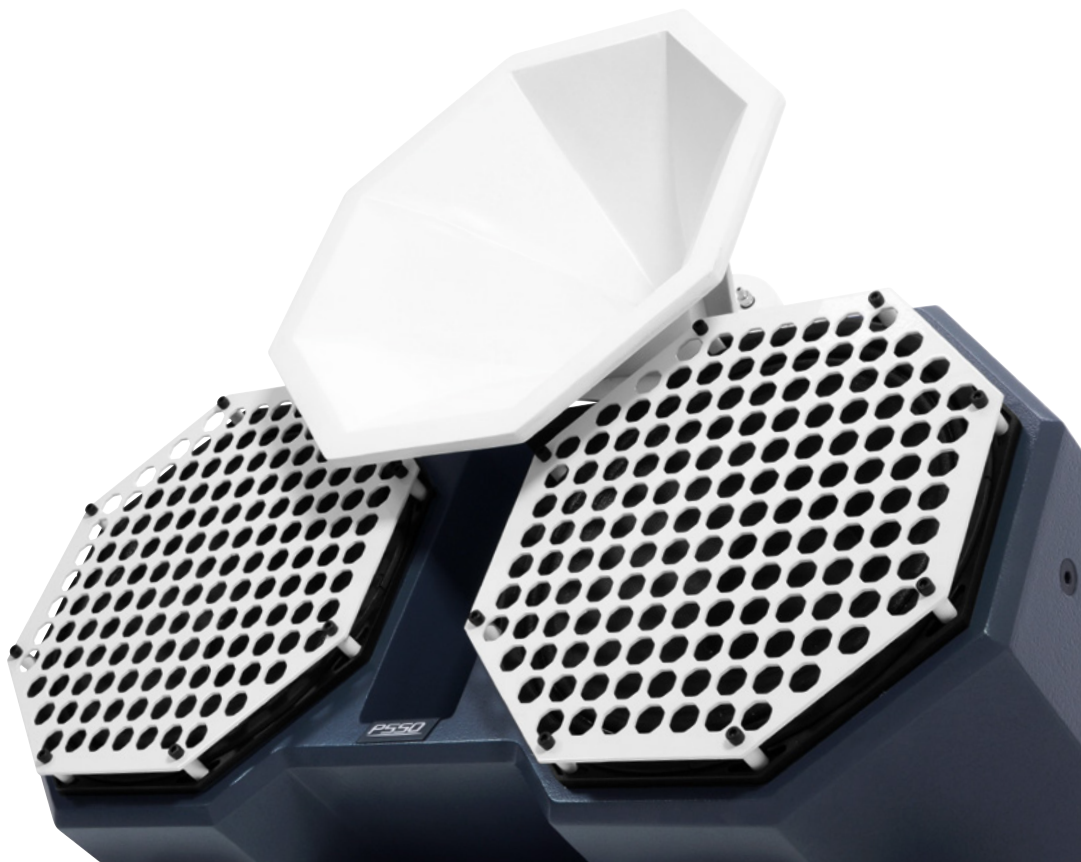


PRIME

CLUB SPEAKER SYSTEM



 PSSO PRIME

Der Name deutet es an: Das PSSO Prime Club System ist ein professionelles Beschallungssystem, das alle Ansprüche zeitgenössischer Clubkultur erfüllt. Was es so einzigartig macht, das ist die Mischung aus hochwertigen technischen Komponenten – alle Premium-Treiber stammen vom französischen Hersteller CELTO Acoustique – und einem extravaganten Design.

Die achteckige Form hebt sich ganz bewusst ab und sorgt für Abwechslung im sonst recht monotonen Erscheinungsbild von Lautsprecher-Systemen. Dabei kann die Farbe der Einzelteile (Korpus, Gitter) auf Basis des RAL-Classicsystems frei gewählt werden. Auf diese Weise ist eine bessere Integration in ein bestehendes Interieur möglich.

Als Hauptsysteme stehen ein Doppel-8er (mit 1“-Horn), ein Doppel-12er (mit 1,5“-Horn) und ein Doppel-15er (mit 6,5“-Horn für die Mitten, dual 1,5“-Horn für die Höhen) zur Verfügung. Die Prime-212 und -315 werden bi-amp betrieben. Den unteren Frequenzbereich übernehmen ein Doppel-18er (PRIME-182) und ein Doppel-15er (PRIME-152). Sie haben RMS-Leistungen von 3 kW bzw. 1,4 kW. Der maximale Schalldruck liegt bei 142 dB und 136 dB.

Die zwei Koaxial-Systeme (10“ Woofer, 1“ Horn oder 12“/1,4“) bilden ein unterstützendes Background-System. In kleineren Räumen können sie dagegen auch als Hauptsystem fungieren. Ihre schmalen Abmessungen erlauben eine einfache und platzsparende Installation. Vervollständigt wird das Prime-System durch die eigens für sie entwickelte Endstufe. Perfekt aufeinander abgestimmt, erzielen die Komponenten zusammen die bestmögliche Leistung.

The name says it all: The PSSO Prime System is a professional PA system meeting the demands of contemporary club culture. What makes it so unique is the mixture between high quality technical components – all premium drivers come from the French company CELTO Acoustique – and an extravagant design.

The octagonal form deliberately stands out and brings variety into the usually rather monotonous appearance of PA systems. Thereby the colors of single parts (body, grille) can be chosen freely based on the RAL classic system. By doing this, it's possible to integrate the speaker system into an existing interior.

Main systems are a double 8“ (with 1“ horn), a double 12“ (with 1.5“ horn) and a double 15“ (with 6.5“ horn for mids, dual 1.5“ horn for highs). Prime-215 and -315 are operated bi-amplified.

For the lower frequencies a double 18“ (PRIME-182) and a double 15“ (PRIME-152) are attached. They have an RMS power of 3 and 1.4 kW respectively. The maximum sound pressure level: 142 and 136 dB respectively. Two coaxial systems with 10“ woofer and 1“ horn or 12“ woofer and 1.4“ horn can be used as main systems in smaller clubs or as background systems in larger venues. Due to their reduced dimensions, a space-saving installation is made easy. It is the Prime System Amplifier which completes the series. It has been developed especially for the system and brings out the best of all components.





CLUB SPEAKER

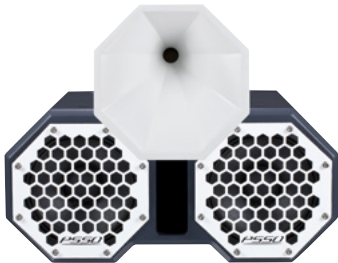
- Gehäuse aus 18 mm (13 Schichten) starkem Multiplex-Birkenholz
- 2 x 20-cm-Ferrit-Bass (8") mit Alu-Druckgusskorb
- 25-mm-Hochtontreiber (1"), 51-mm-Schwingspule (2")
- Maßgefertigte Premium-Treiber von CELTO Acoustique (Frankreich)
- Bassreflexsystem
- Neutrik-Speakon-Anschlüsse
- Gehäuse mit strapazierfähigem Strukturlack

No. 11041168

PRIME 208

- *Housing made of 18 mm (13 layers) birch plywood*
- *2 x 20 cm ferrite bass speaker (8") with diecast aluminum basket*
- *25 mm driver (1"), 51 mm voice coil (2")*
- *Premium custom-made drivers by CELTO Acoustique (France)*
- *Bassreflex system*
- *Neutrik Speakon connectors*
- *Scratch-resistant lacquer surface*
- *Applications: standing or suspended*

<i>Rated power:</i>	400 W RMS
<i>Components:</i>	2 x 20 cm woofer (8"), 2.5 cm horn tweeter (1"), 51 mm voice coil
<i>Connections:</i>	2 x Speakon
<i>Sensitivity (1 W/m):</i>	98 dB
<i>Max. SPL:</i>	130 dB (1 m)
<i>Impedance:</i>	4 ohms
<i>Frequency range:</i>	56 Hz - 19 kHz
<i>Crossover frequency:</i>	1.5 kHz
<i>Dispersion angle (HxV):</i>	50° to 100° x 10° to -30°
<i>Dimensions (HxWxD):</i>	400 x 530 x 420 mm
<i>Weight:</i>	22 kg



CLUB SPEAKER



PRIME 212

No. 11041170

- Biamp-Betrieb
- Gehäuse aus 18 mm (13 Schichten) und 25 mm (17 Schichten) starkem Multiplex-Birkenholz
- 2 x 30-cm-Neodym-Bass (12") mit Alu-Druckgusskorb
- 36-mm-Neodym-Hochtontreiber (1,5"), 72-mm-Schwingspule (2,8")
- Maßgefertigte Premium-Treiber von CELTO Acoustique (Frankreich)
- Bassreflexsystem
- Neutrik-Speakon-Anschlüsse
- Gehäuse mit strapazierfähigem Strukturlack

- *Biamp operation*
- *Housing made of 18 mm (13 layers) and 25 mm (17 layers) birch plywood*
- *2 x 30 cm neodymium bass speaker (12") with diecast aluminum basket*
- *36 mm neodymium driver (1.5"), 72 mm voice coil (2.8")*
- *Premium custom-made drivers by CELTO Acoustique (France)*
- *Bassreflex system*
- *Neutrik Speakon connectors*
- *Scratch-resistant lacquer surface*

<i>Rated power:</i>	1000 W RMS LF
	100 W RMS HF
<i>Components:</i>	2 x 30 cm woofer (12"), 3.6 cm horn tweeter (1.5"), 72 mm voice coil
<i>Connections:</i>	2 x Speakon, 4-pin
<i>Sensitivity (1 W/m):</i>	101 dB
<i>Max. SPL:</i>	137 dB (1 m)
<i>Impedance:</i>	4 ohms LF 8 ohms HF
<i>Frequency range:</i>	55 Hz - 19 kHz
<i>Crossover frequency:</i>	1.2 kHz
<i>Dispersion angle (HxV):</i>	50° to 100° x 10° to -30°
<i>Dimensions (HxWxD):</i>	348 x 756 x 494 mm
<i>Weight:</i>	34 kg



PRIME 152 No. 11041177

SUBWOOFER

- Robuster Profi-Basreflex-Subwoofer, entwickelt für Clubs und Touring-Anwendungen
- Gehäuse aus 18 mm (13 Schichten) starkem Multiplex-Birkenholz
- 2 x 38-cm-Bass (15"), 100-mm-Schwingspule (4"), Alu-Druckgusskorb
- Maßgefertigte Premium-Treiber vom europäischen Hersteller CELTO Acoustique
- Parallele Neutrik-Speakon-Anschlüsse
- Metallflansch zur Montage eines Topteils
- Tragegriffe und GummifüÙe
- Strapazierfähiger Strukturlack

- *Rugged pro bassreflex subwoofer, qualified for clubs and touring applications*
- *Housing made of 18 mm (13 layers) birch plywood*
- *2 x 38 cm (15") bass speaker, 100 mm voice coil (4"), diecast aluminum basket*
- *Premium custom-made drivers by European manufacturer CELTO Acoustique*
- *Parallel Neutrik Speakon connectors*
- *Metal flange for top speakers*
- *Carrying handles and rubber feet*
- *Scratch-resistant lacquer surface*

<i>Rated power:</i>	1400 W RMS
<i>Components:</i>	2 x 38 cm woofer (2 x 15"), 100 mm voice coil
<i>Connections:</i>	2 x Speakon
<i>Sensitivity (1 W/m):</i>	99 dB
<i>Max. SPL:</i>	136 dB (1 m)
<i>Impedance:</i>	4 ohms
<i>Frequency range:</i>	39 - 1600 Hz
<i>Dimensions (HxWxD):</i>	505 x 950 x 505 mm
<i>Weight:</i>	63 kg

SUBWOOFER



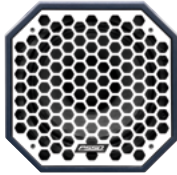
No. 11041178
PRIME 182

- Robuster Profi-Bassreflex-Subwoofer, entwickelt für Clubs und Touring-Anwendungen
- Gehäuse aus 25 mm (17 Schichten) und 18 mm (13 Schichten) starkem Multiplex-Birkenholz
- 2 x 45-cm-Bass (18"), 115-mm-Schwingspule (4,5"), Alu-Druckgusskorb
- Maßgefertigte Premium-Treiber vom europäischen Hersteller CELTO Acoustique
- Parallele Neutrik-Speakon-Anschlüsse
- Metallflansch zur Montage eines Toptells
- Tragegriffe und GummifüÙe
- Strapazierfähiger Strukturlack

- *Rugged pro bassreflex subwoofer, qualified for clubs and touring applications*
- *Housing made of 25 mm (17 layers) and 18 mm (13 layers) birch plywood*
- *2 x 45 cm (18") bass speaker, 115 mm voice coil (4.5"), diecast aluminum basket*
- *Premium custom-made drivers by European manufacturer CELTO Acoustique*
- *Parallel Neutrik Speakon connectors*
- *Metal flange for top speakers*
- *Carrying handles and rubber feet*
- *Scratch-resistant lacquer surface*

Rated power:	3000 W RMS
Components:	2 x 45 cm woofer (2 x 18"), 115 mm voice coil
Connections:	2 Speakon
Sensitivity (1 W/m):	101 dB
Max. SPL:	142 dB (1m)
Impedance:	4 ohms
Frequency range:	35 - 1300 Hz
Dimensions (HxWxD):	594 x 1094 x 695 mm
Weight:	88 kg

COAXIAL SPEAKER



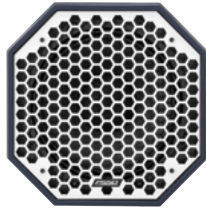
No. 11041174

PRIME 10CX

- Gehäuse aus Multiplex-Birnenholz, 15 mm/11 Schichten
 - 25-cm-Neodym-Bass (10") mit Alu-Druckgusskorb
 - 25-mm-Neodym-Hochtontreiber (1"), 44-mm-Schwingspule (1,7")
 - Maßgefertigte Premium-Treiber von CELTO Acoustique (Frankreich)
 - Passive 2-Wege-Frequenzweiche
 - Bassreflexsystem
 - Parallele Neutrik-Speakon-Anschlüsse
 - Schwenkbarer Montagebügel für Wand- oder Deckenmontage
 - Strapazierfähiger Strukturlack
-
- *Housing made of birch plywood, 15 mm/11 layers*
 - *25 cm neodymium (10") bass speaker with diecast aluminum basket*
 - *25 mm neodymium driver (1"), 44 mm voice coil (1.7")*
 - *Premium custom-made drivers by CELTO Acoustique (France)*
 - *Passive 2-way crossover*
 - *Bassreflex system*
 - *Parallel Neutrik Speakon connectors*
 - *Movable mounting bracket for ceiling or wall installation*
 - *Scratch-resistant lacquer surface*

<i>Rated power:</i>	300 W RMS
<i>Components:</i>	25 cm woofer (10"), 2.5 cm horn (1"), 44 mm voice coil
<i>Connections:</i>	2 x Speakon
<i>Sensitivity (1 W/m):</i>	98 dB
<i>Max. SPL:</i>	128 dB (1 m)
<i>Impedance:</i>	8 ohms
<i>Frequency range:</i>	68 Hz - 21 kHz
<i>Crossover frequency:</i>	1.6 kHz
<i>Dispersion angle (HxV):</i>	70° x 70°
<i>Dimensions (HxWxD):</i>	300 x 300 x 300 mm
<i>Weight:</i>	10 kg

COAXIAL SPEAKER



PRIME 12CX

No. 11041175

- Gehäuse aus Multiplex-Birkenholz, 18 mm/13 Schichten
- 30-cm-Neodym-Bass (12") mit Alu-Druckgusskorb
- 36-mm-Neodym-Hochtontreiber (1,4"), 72-mm-Schwingspule (2,8")
- Maßgefertigte Premium-Treiber von CELTO Acoustique (Frankreich)
- Passive 2-Wege-Frequenzweiche
- Bassreflexsystem
- Parallele Neutrik-Speakon-Anschlüsse
- Schwenkbarer Montagebügel für Wand- oder Deckenmontage
- Strapazierfähiger Strukturlack

- *Housing made of birch plywood 18 mm/13 layers*
- *30 cm neodymium (12") bass speaker with diecast aluminum basket*
- *36 mm neodymium driver (1.4"), 72 mm voice coil (2.8")*
- *Premium custom-made drivers by CELTO Acoustique (France)*
- *Passive 2-way crossover*
- *Bassreflex system*
- *Parallel Neutrik Speakon connectors*
- *Movable mounting bracket for ceiling or wall installation*
- *Scratch-resistant lacquer surface*

<i>Rated power:</i>	400 W RMS
<i>Components:</i>	30 cm woofer (12"), 3.6 cm horn (1.4"), 72 mm voice coil

<i>Connections:</i>	2 x Speakon
<i>Sensitivity (1 W/m):</i>	100 dB
<i>Max. SPL:</i>	132 dB (1 m)
<i>Impedance:</i>	8 ohms
<i>Frequency range:</i>	59 Hz - 21 kHz
<i>Crossover frequency:</i>	1.4 kHz
<i>Dispersion angle (HxV):</i>	70° x 70°
<i>Dimensions (HxWxD):</i>	380 x 380 x 380 mm
<i>Weight:</i>	15 kg

CLUB SPEAKER



No. 11041172

PRIME 315

- Biamp-Betrieb
 - Gehäuse aus Multiplex-Birkenholz
25 mm/7 Schichten + 18 mm/13 Schichten
 - Maßgefertigte Premium-Treiber von CELTO Acoustique (Frankreich)
 - 2 x 38-cm-Neodym-Bass (15") mit Alu-Druckgusskorb
 - 16,5-cm-Neodym-Mitteltöner (6,5") mit Alu-Druckgusskorb,
51-mm-Schwingspule (2")
 - 36-mm-Neodym-Hochtontreiber (1,4"), 72-mm-Schwingspule (2,8")
 - Bassreflexsystem
 - Neutrik-Speakon-Anschlüsse
 - Gehäuse mit strapazierfähigem Strukturlack
- *Biamp operation*
 - *Housing made of birch plywood 25 mm/17 layers + 18 mm/13 layers*
 - *Premium custom-made drivers by CELTO Acoustique (France)*
 - *2 x 38 cm neodymium bass speaker (12") with diecast aluminum basket*
 - *16.5 cm neodymium midrange speaker (6.5") with diecast aluminum basket, 51 mm voice coil (2")*
 - *36 mm neodymium driver (1.4"), 72 mm voice coil (2.8")*
 - *Bassreflex system*
 - *Neutrik Speakon connectors*
 - *Scratch-resistant lacquer surface*

<i>Rated power:</i>	1800 W RMS LF, 300 W RMS HF
<i>Components:</i>	2 x 38 cm woofer (15"), 16.5 cm horn tweeter (6.5") 2 x 3.6 cm horn tweeter (1.4"), 72 mm voice coil
<i>Connections:</i>	2 x Speakon, 4-pin
<i>Sensitivity (1 W/m):</i>	102 dB
<i>Max. SPL:</i>	140 dB (1 m)
<i>Impedance:</i>	4 ohms LF, 8 ohms HF
<i>Frequency range:</i>	46 Hz - 19 kHz
<i>Crossover frequency:</i>	650 Hz, 2.2 kHz
<i>Dispersion angle (HxV):</i>	80° x 50°
<i>Dimensions (HxWxD):</i>	815 x 838 x 584 mm
<i>Weight:</i>	75 kg

SYSTEM AMPLIFIER



No. 10451701

PRIMEAMPLIFIER

- 6-Kanal-Endstufe mit leistungsstarkem DSP, frei programmierbar
- Sample-Frequenz 96 kHz und 64-Bit-Technologie
- Erstklassige Bauteile gewährleisten exzellente Klangeigenschaften
- Effiziente Class-D-Endstufentechnik
- 2 Pascal-Endstufenmodule
- 2 x 5-polige Neutrik-Speakon-Ausgänge
- Neutrik Powercon -Netzanschluss
- Echtzeit-Fernsteuerung über Ethernet-LAN-Schnittstelle
- Intuitive Software für PC und Mac im Lieferumfang
- 80 Presets speichern- und aufrufbar

- *6-channel PA amplifier with high-performance DSP, freely programmable*
- *Sample frequency: 96 kHz and 64-bit technology*
- *Premium components ensure excellent sound features*
- *Efficient class D amplifier circuitry*
- *2 Pascal amplifier modules*
- *2 x 5 pole Neutrik Speakon outputs*
- *Neutrik Powercon mains input*
- *Real-time remote control via built-in Ethernet LAN interface*
- *User-friendly software for PC and Mac included*
- *80 presets can be stored and activated*

Power supply:	100-240 V AC, 50/60 Hz ~
Power consumption:	920 W (1/8 power)
Power output (RMS):	
Channel 1, 4:	2400 W at 4 ohms 1500 W at 8 ohms
Channel 2, 3, 5, 6:	800 W at 4 ohms 400 W at 8 ohms
Channel 2/3, 5/6 bridged:	2 x 1500 W at 8 ohms
Frequency response:	20-20000 Hz
Signal-to-Noise ratio:	>120 dB
Total harmonic distortion:	<0.05 % (20-20000 Hz, 8 ohms)
Damping factor:	>1000 (8 ohms, 1 kHz)
Voltage gain:	LF 32 dB, MF 26 dB
Analog inputs:	4 x XLR
Digital inputs:	2 x AES/EBU (XLR)
Analog output:	4 x XLR (link) 2 x 8-pin Speakon
Communication:	LAN (TCP/IP)
Protection:	Intelligent mains fuse protection, input current limiter, protection against turn-on and turn-off transients, DC protection of outputs, under and over voltage protection
Cooling:	temperature-controlled air-cooling
Controls:	Power switch, encoder, menu, exit
LED indicators:	Protect, Peak, Limit, Signal
Construction:	Steel chassis, aluminum front panel
Dimensions:	483 x 482 x 88 mm Rack installation with 2 U
Weight:	12 kg





WWW.PSSO.DE

PSSO is a brand of Steinigke Showtechnic GmbH

Stand 03.2016