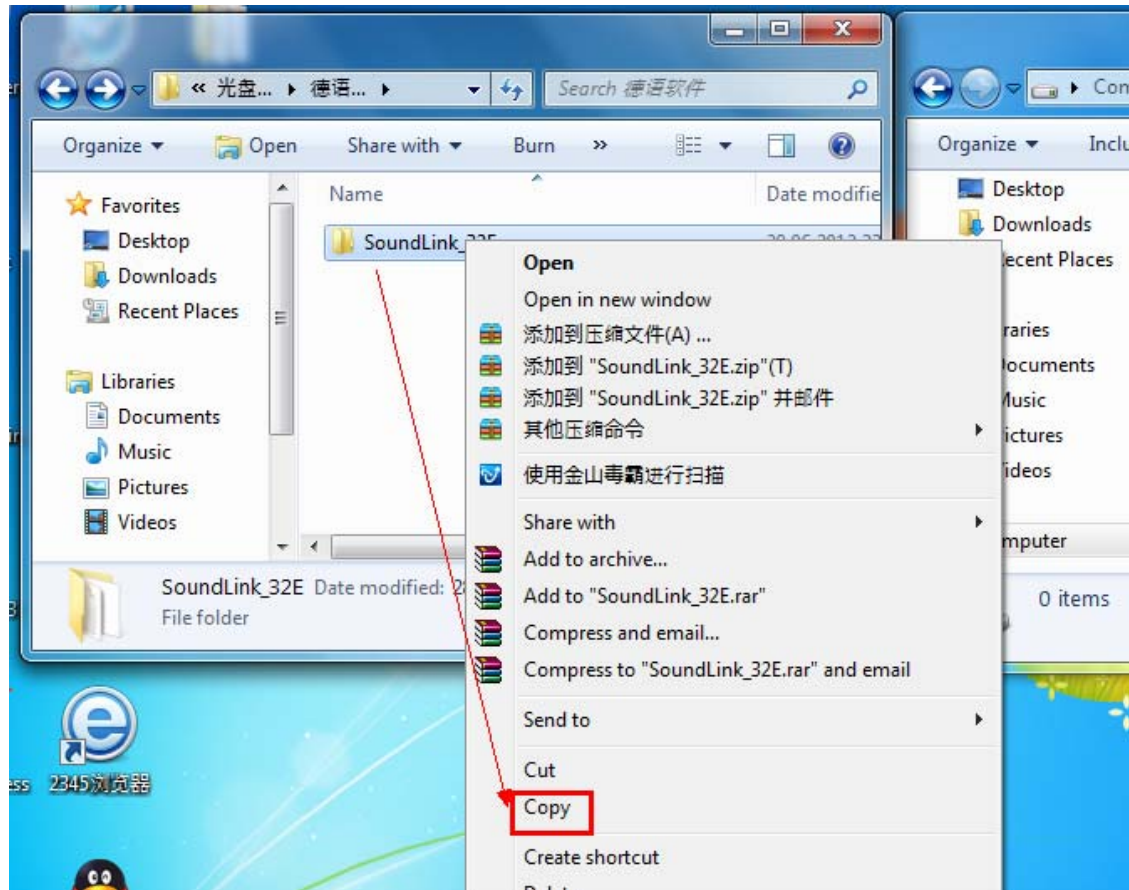
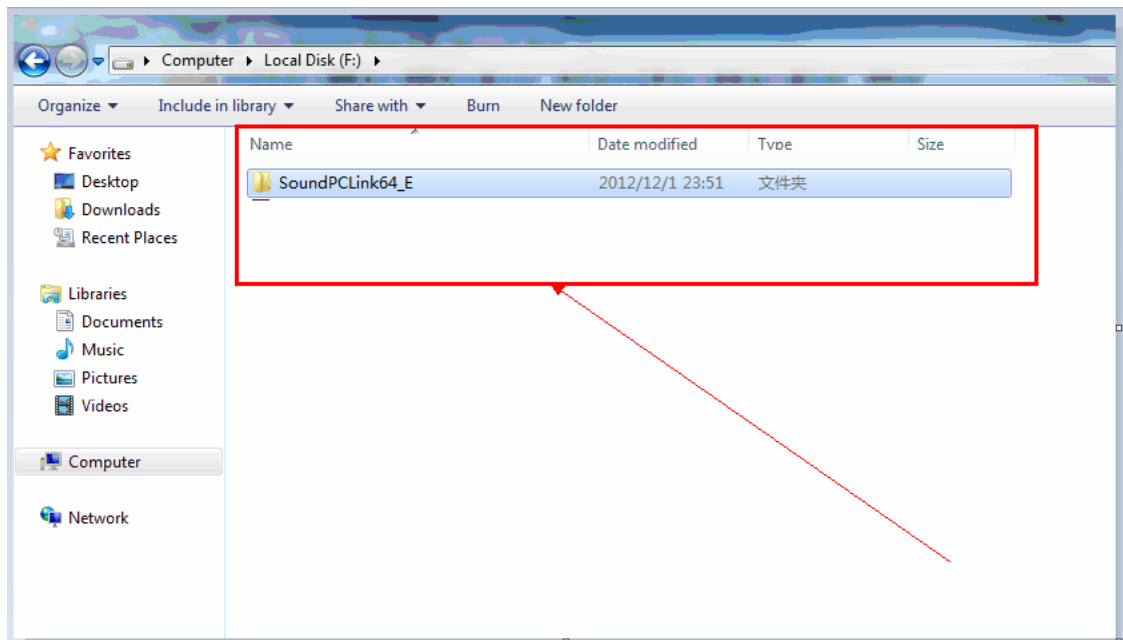


## Software Installation (win 7 64bit)

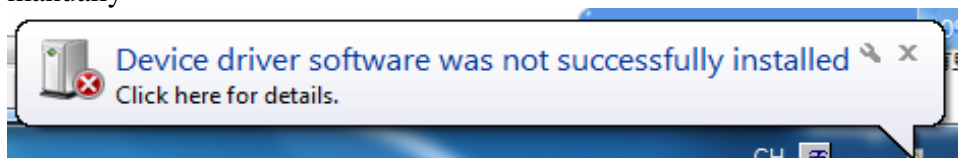
1, Copy the content from the CD to F Disk ( or some other disk ), as it shows below :



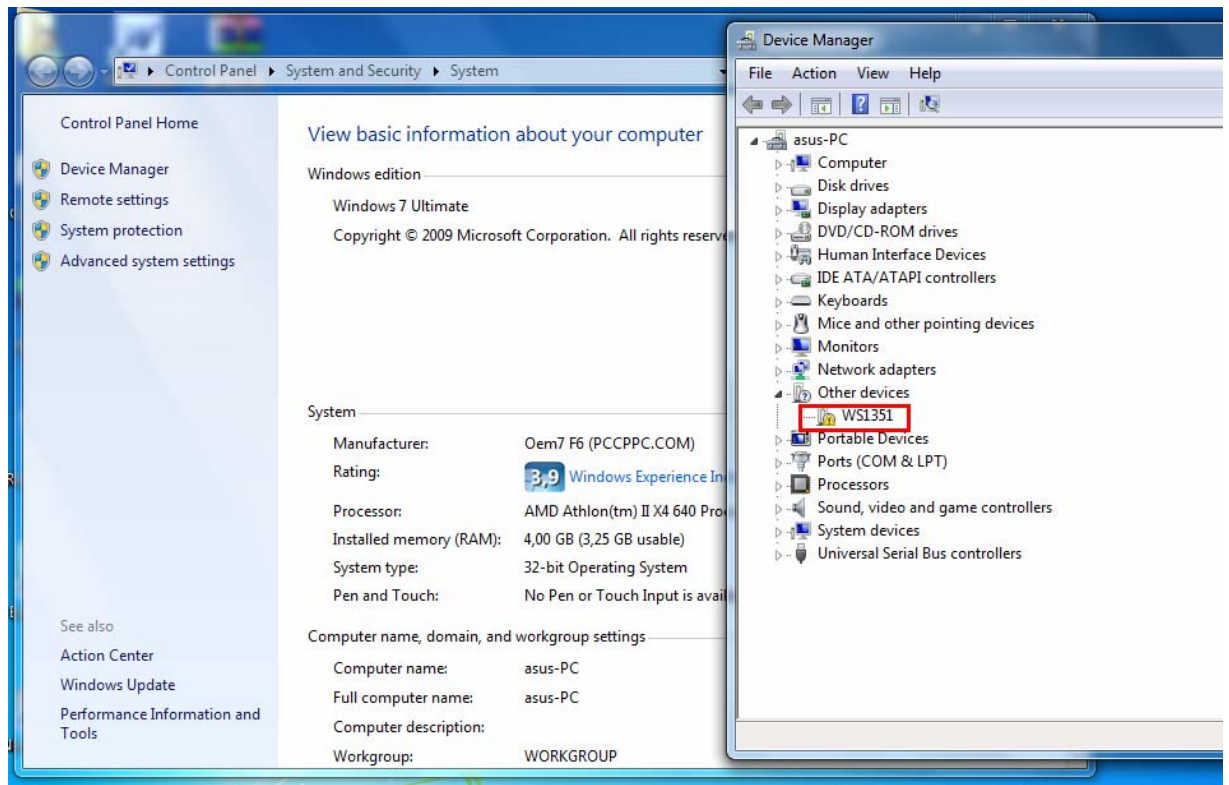
Pasted into F stick as below :



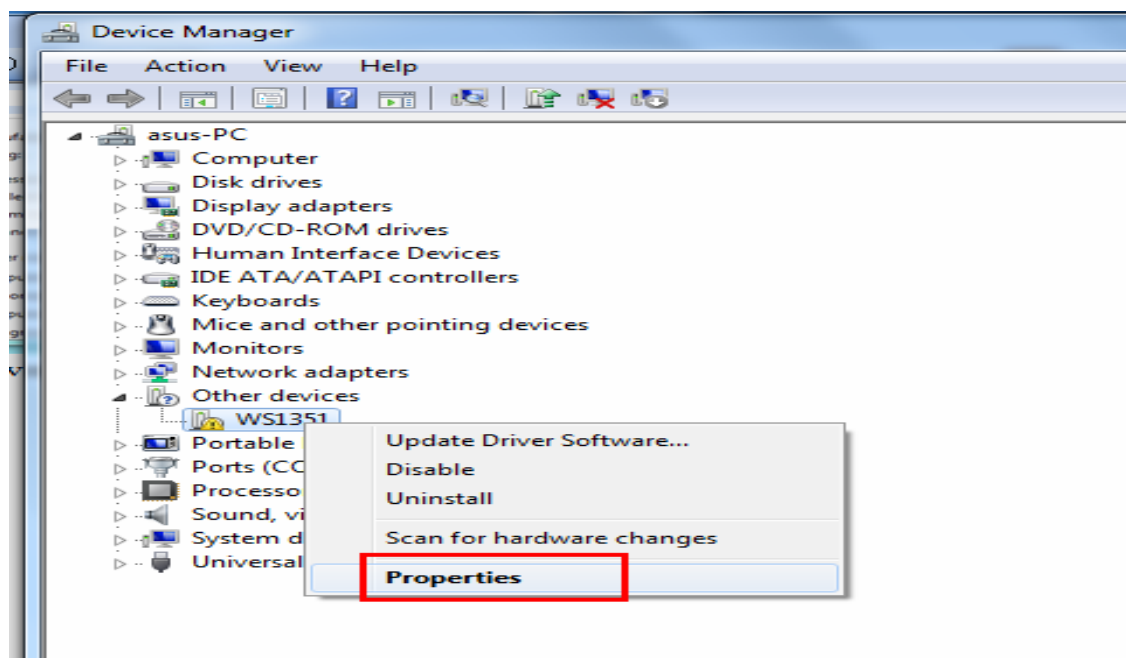
Connect the device to the computer with USB cable , on the right corner of the computer , you will see the the below message , it means you need to install the USB driver manually

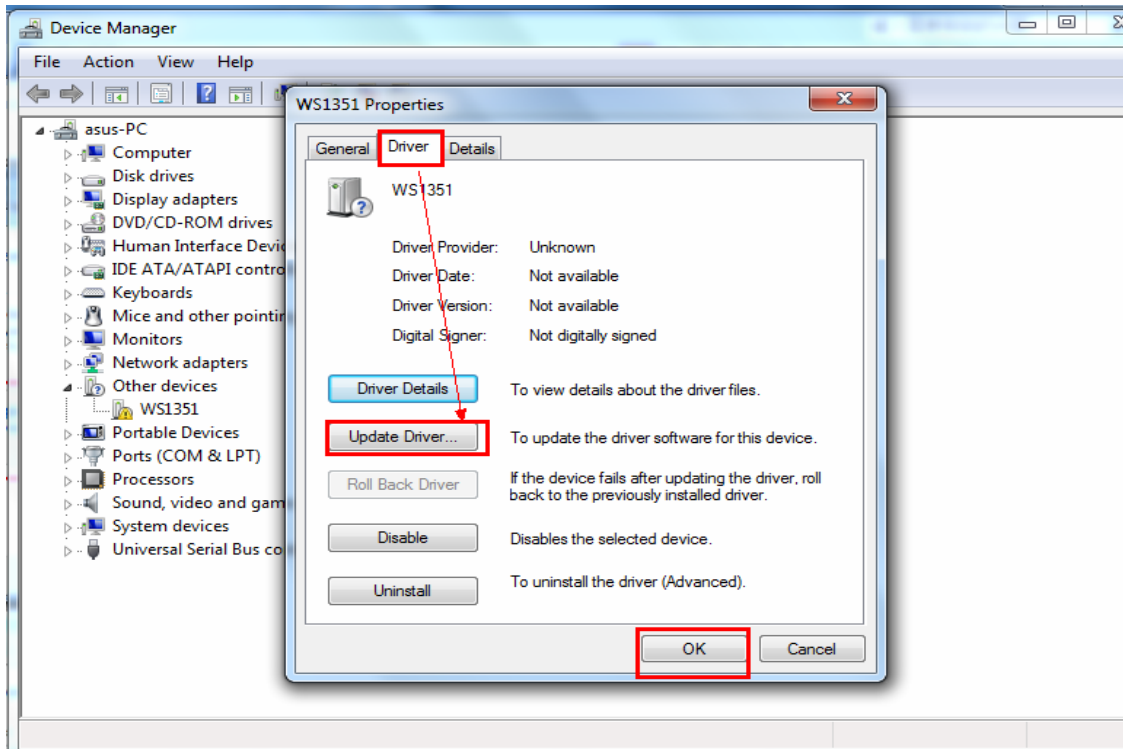


Right click Computer----properties-----Device Manager , you will see below picture :

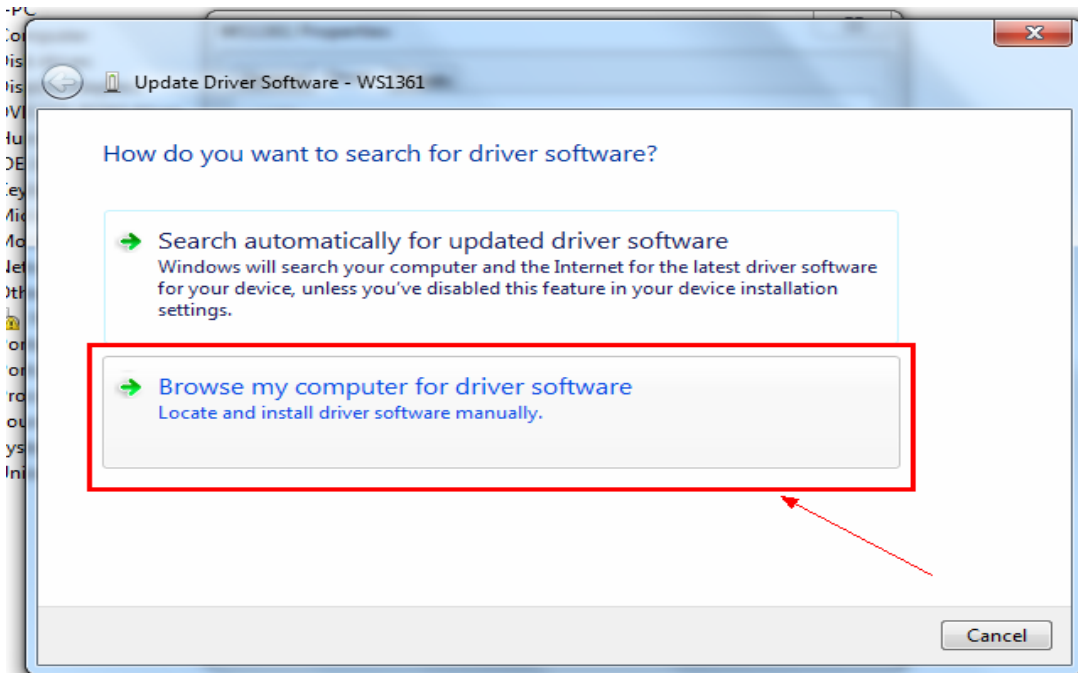


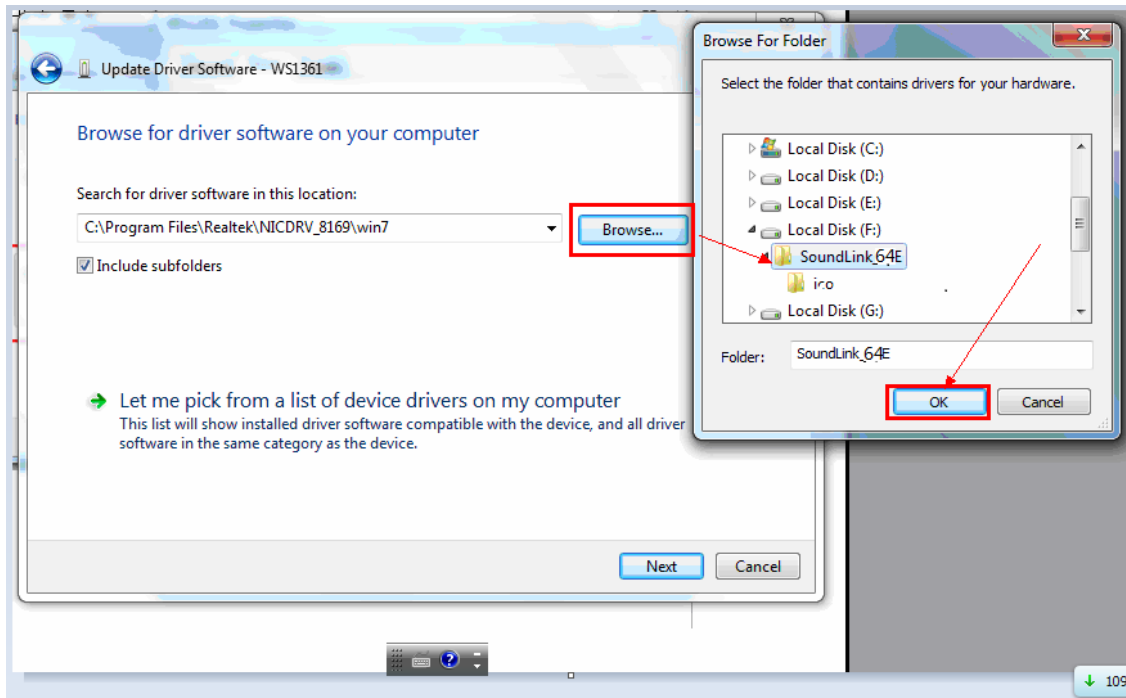
You can see a yellow mark in this picture , and right click it , enter the following picture:



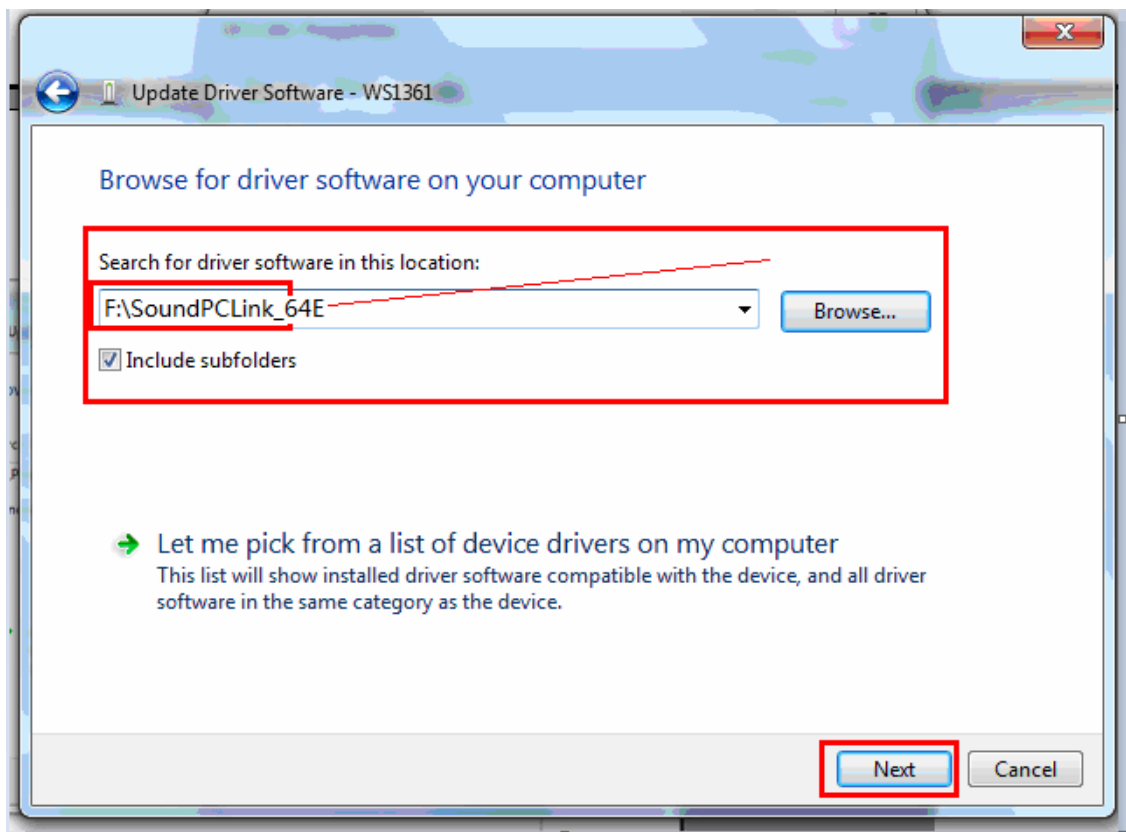


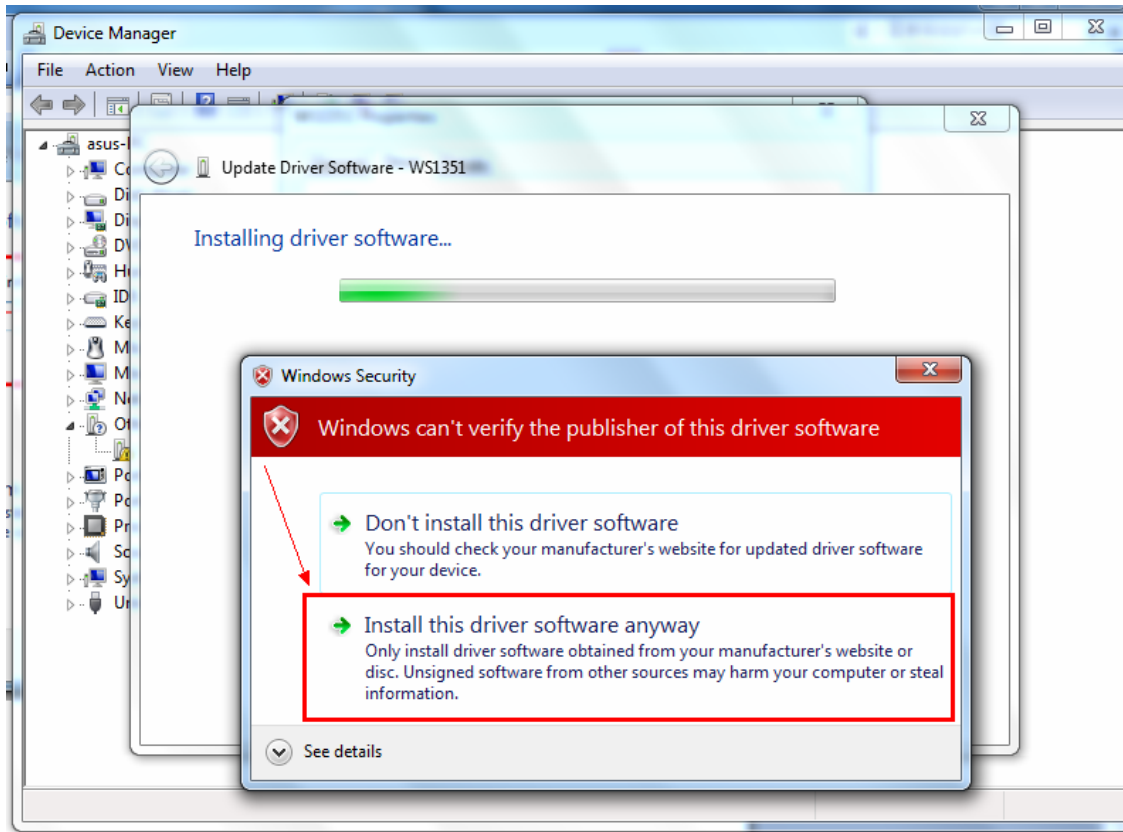
This step is very important :



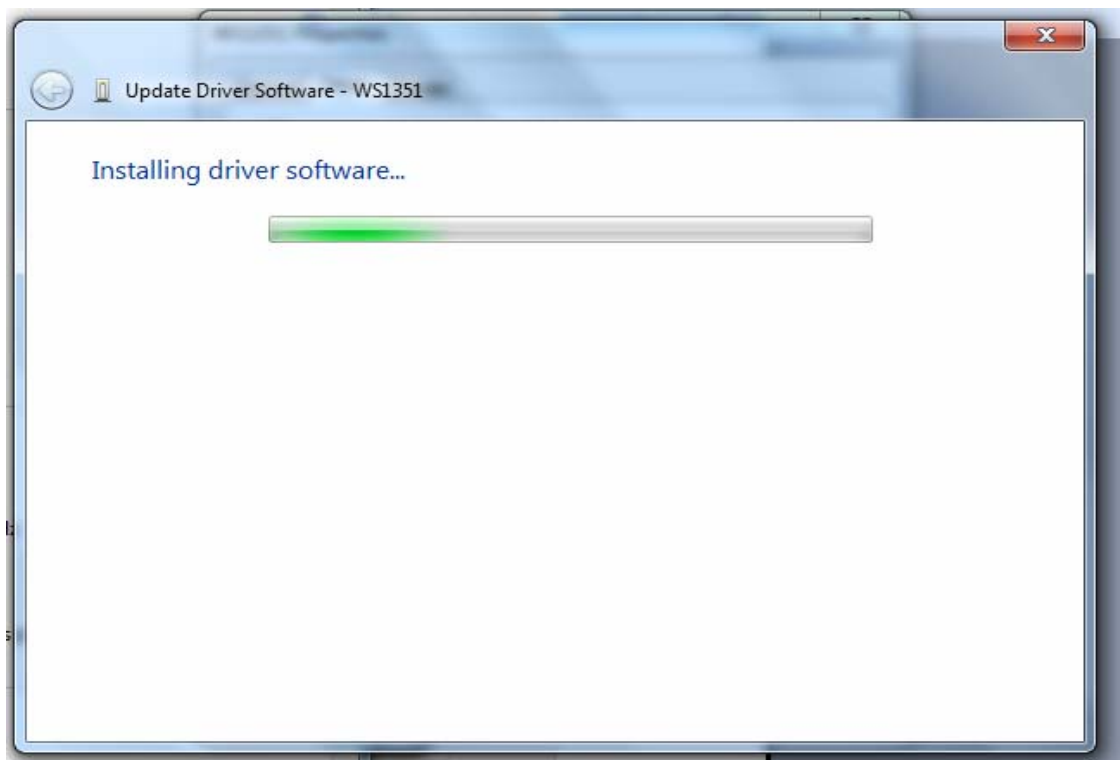


The directory chose here is the same director as the first step . And press "Next"

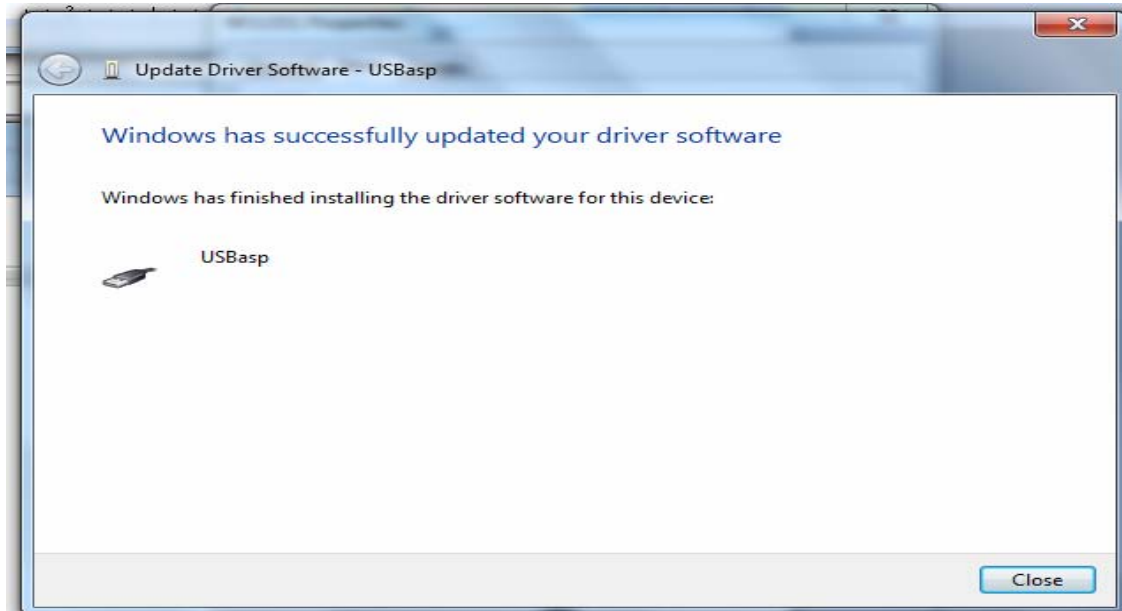




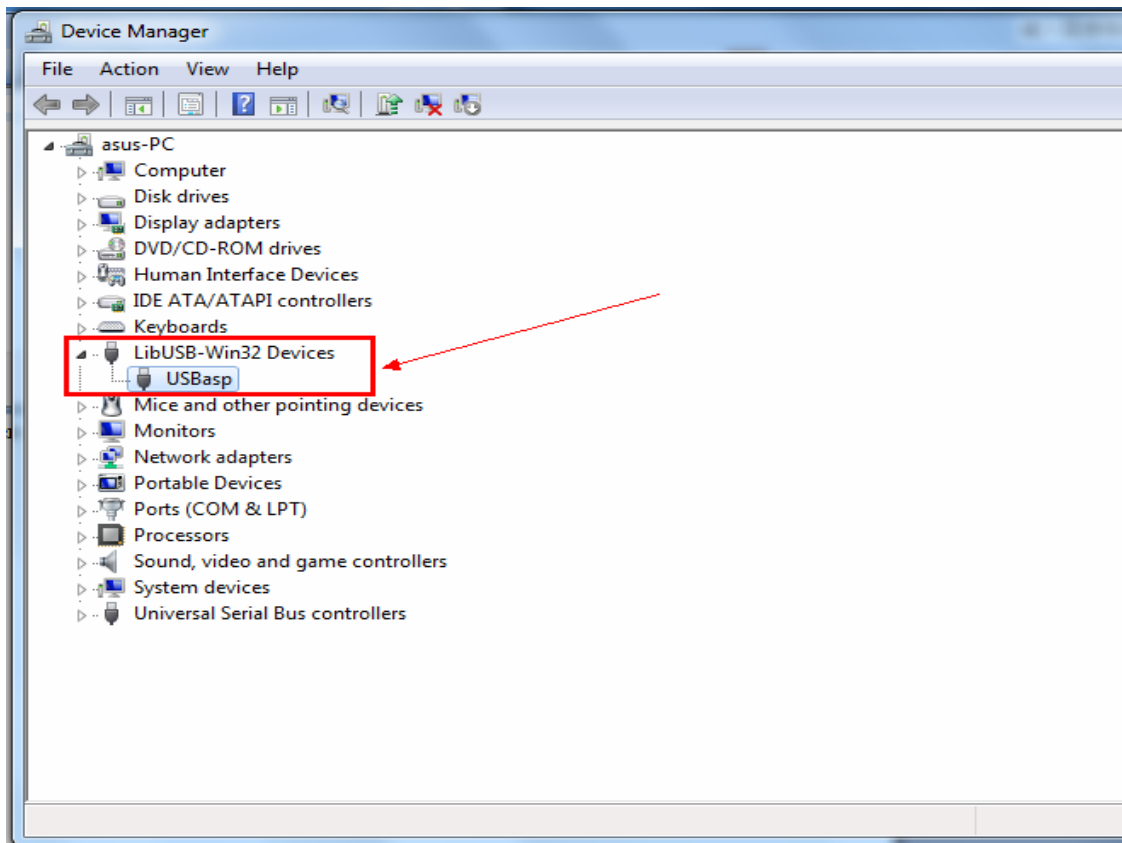
The driver is installing now :



USB driver successfully installed on the computer :

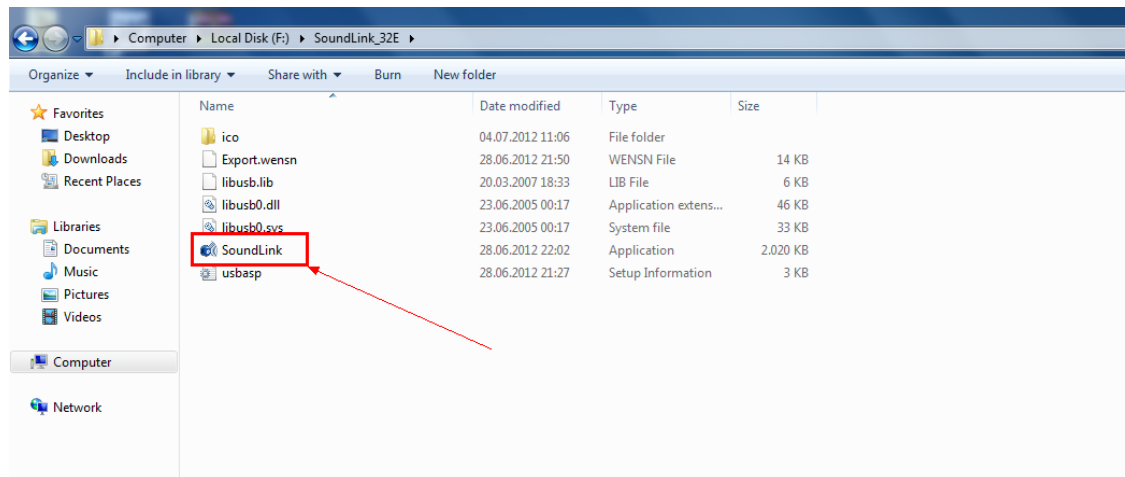


Go back to device manager , you will find a mark that indicates the USB driver is upgraded now :

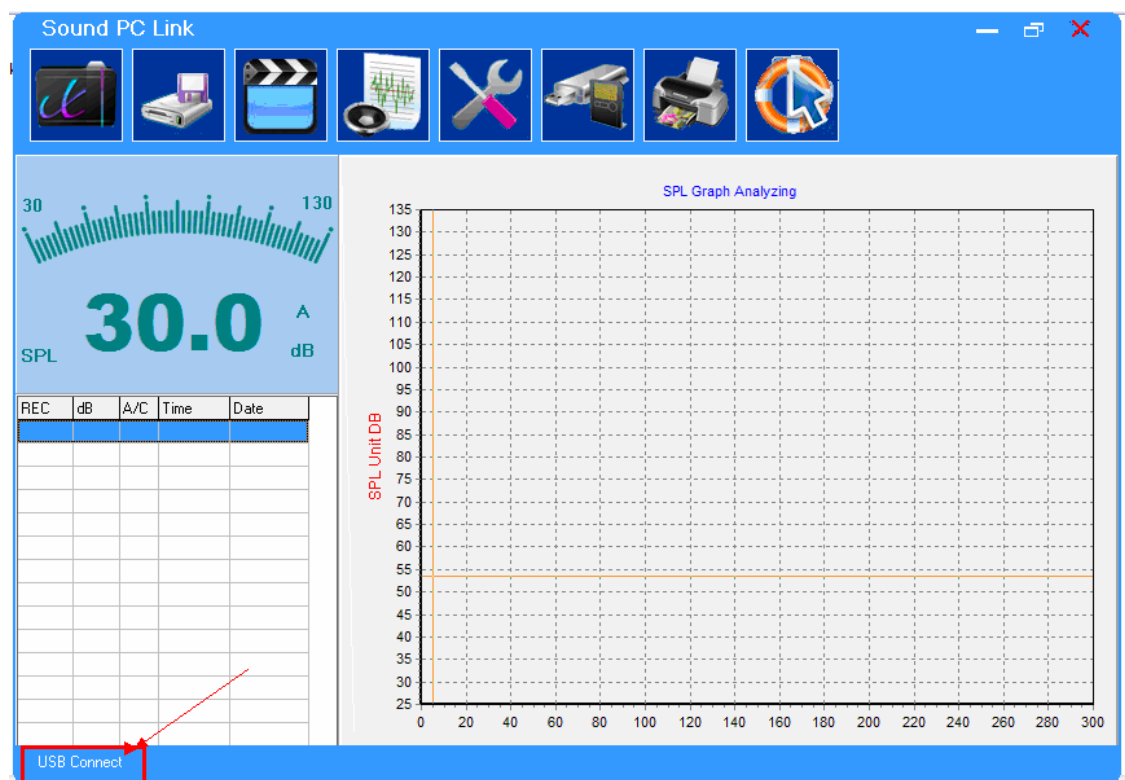


Below is the instruction of how to use the software

1, Open the directory where you put all the contents from the CD.



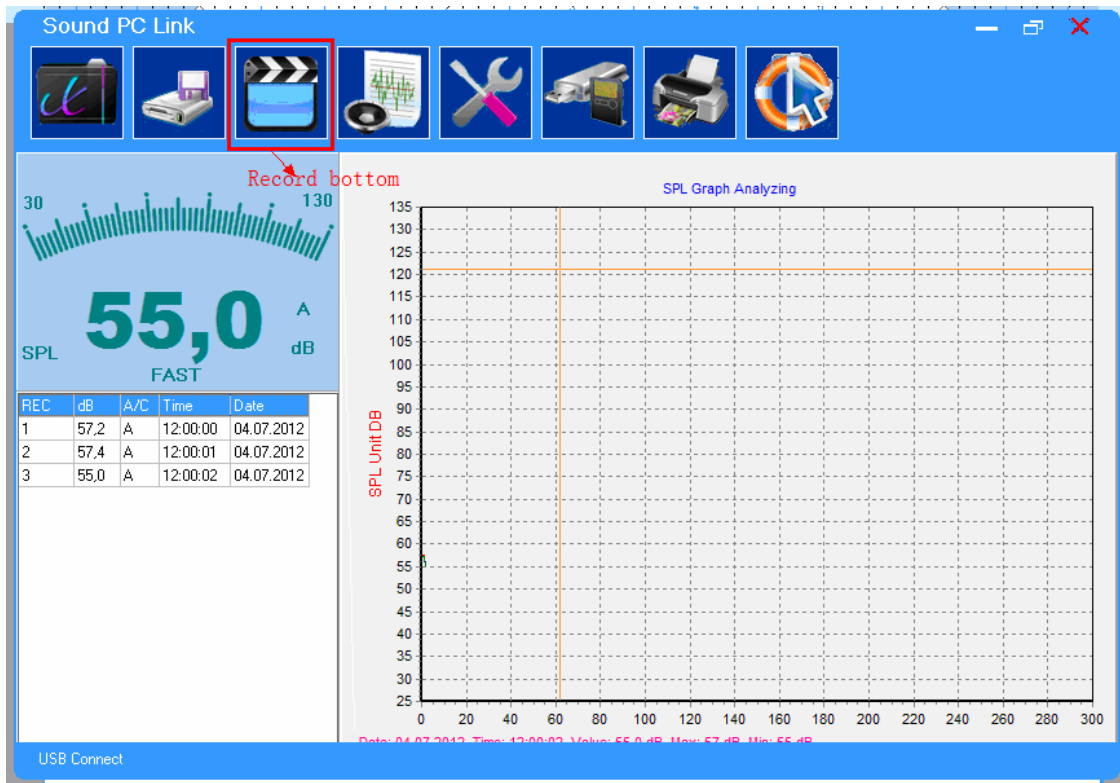
find Sound Link.exe, and double click it .



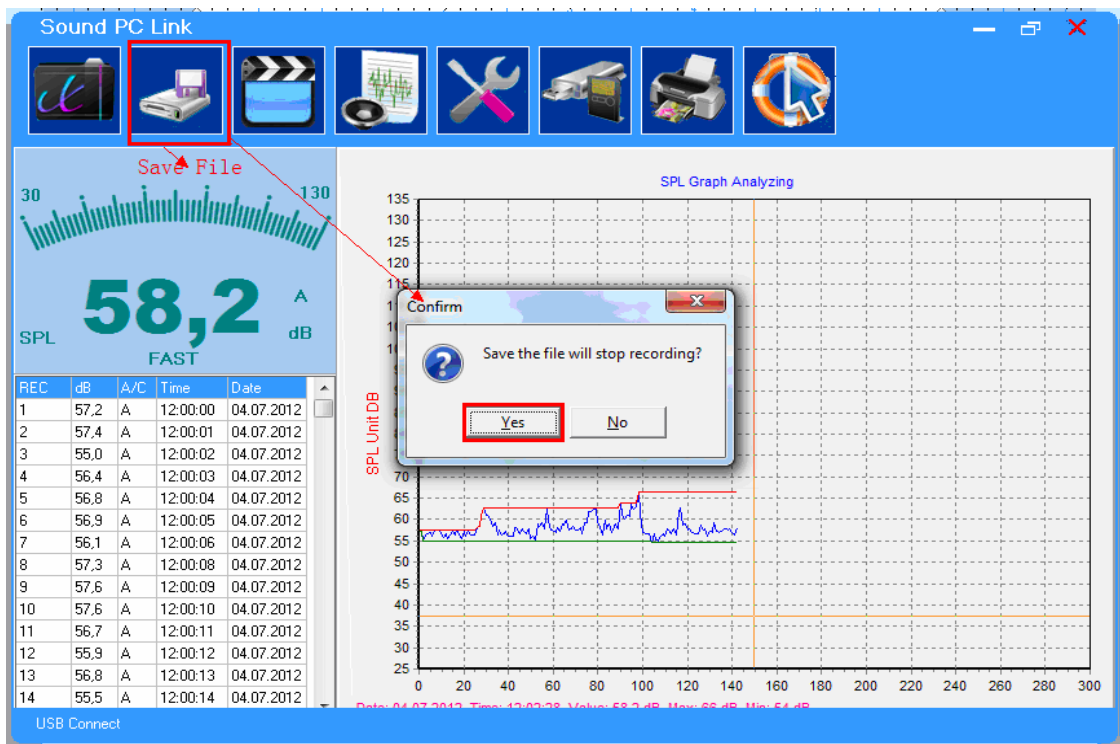
"USB Connect " on the left corner indicates that the device is connected with computer .

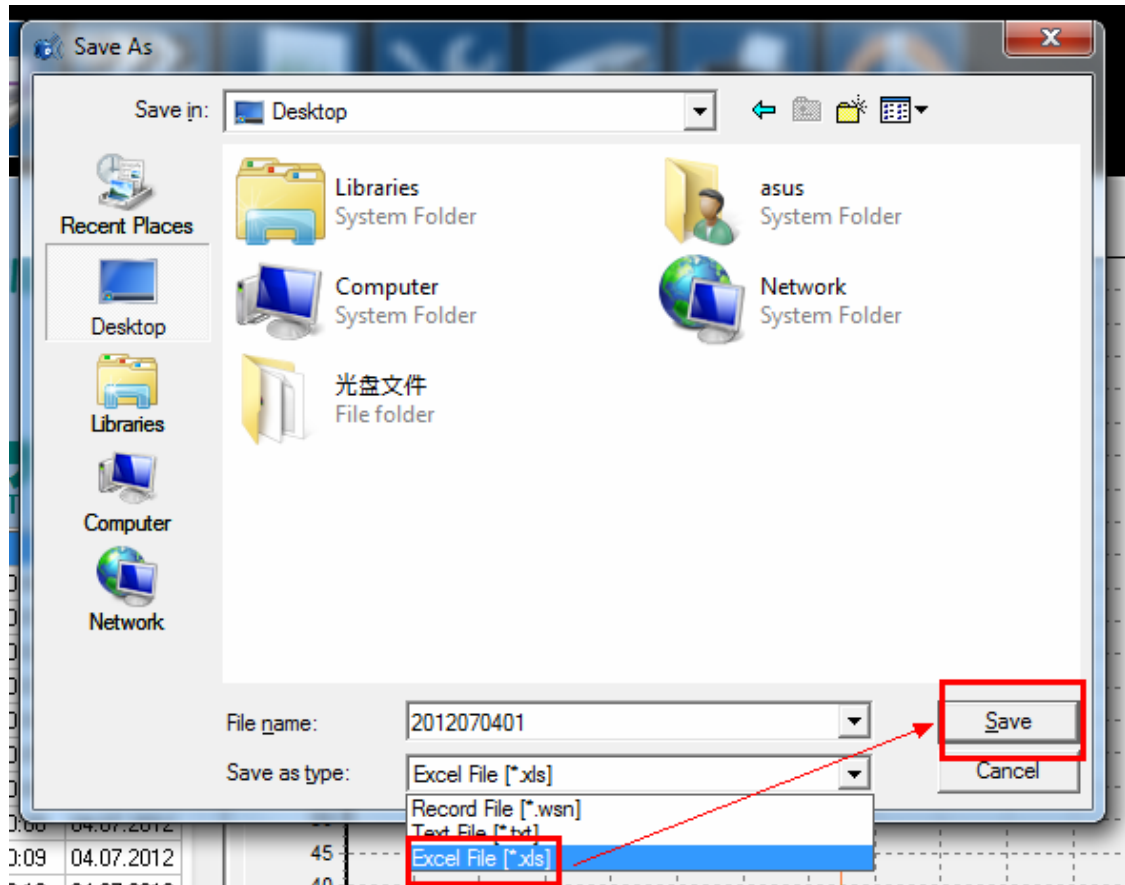


Record button is showing on the below picture :

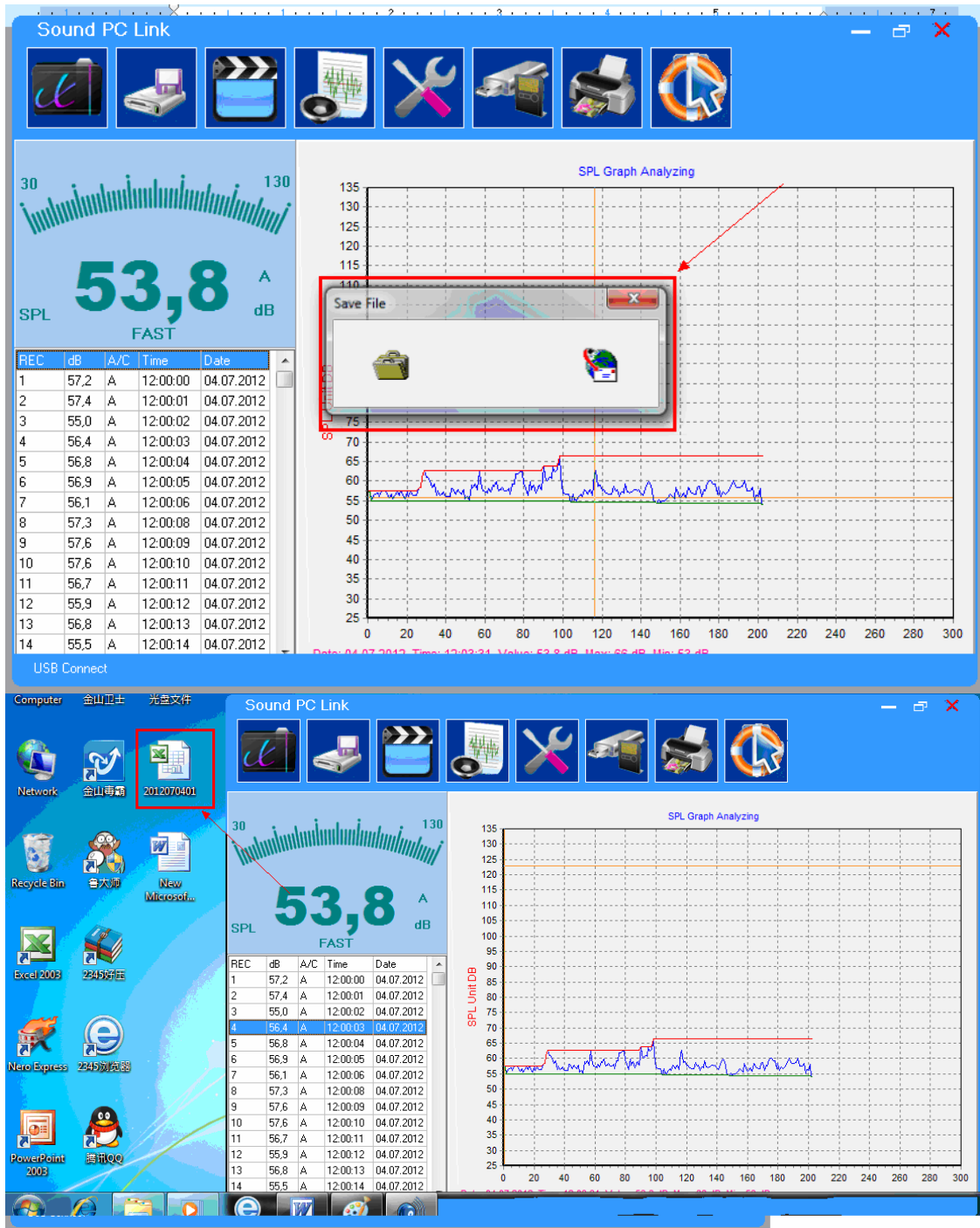


Save the file to excel or txt format , press Yes , on the below picture





It is saving the file now , make sure your computer is under Windows Media players setting . Or the file saving can be failed .



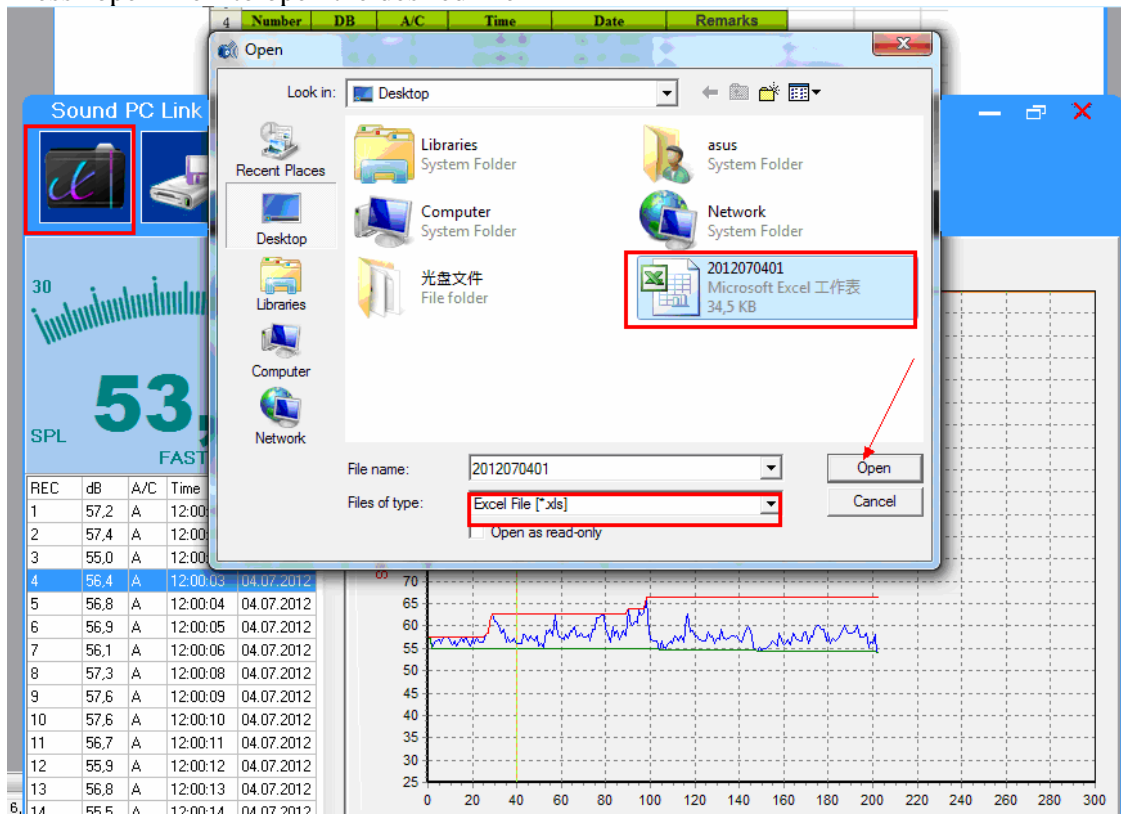
If the file is saved successfully , then you can open and check it with correct software .

Microsoft Excel - 2012070401

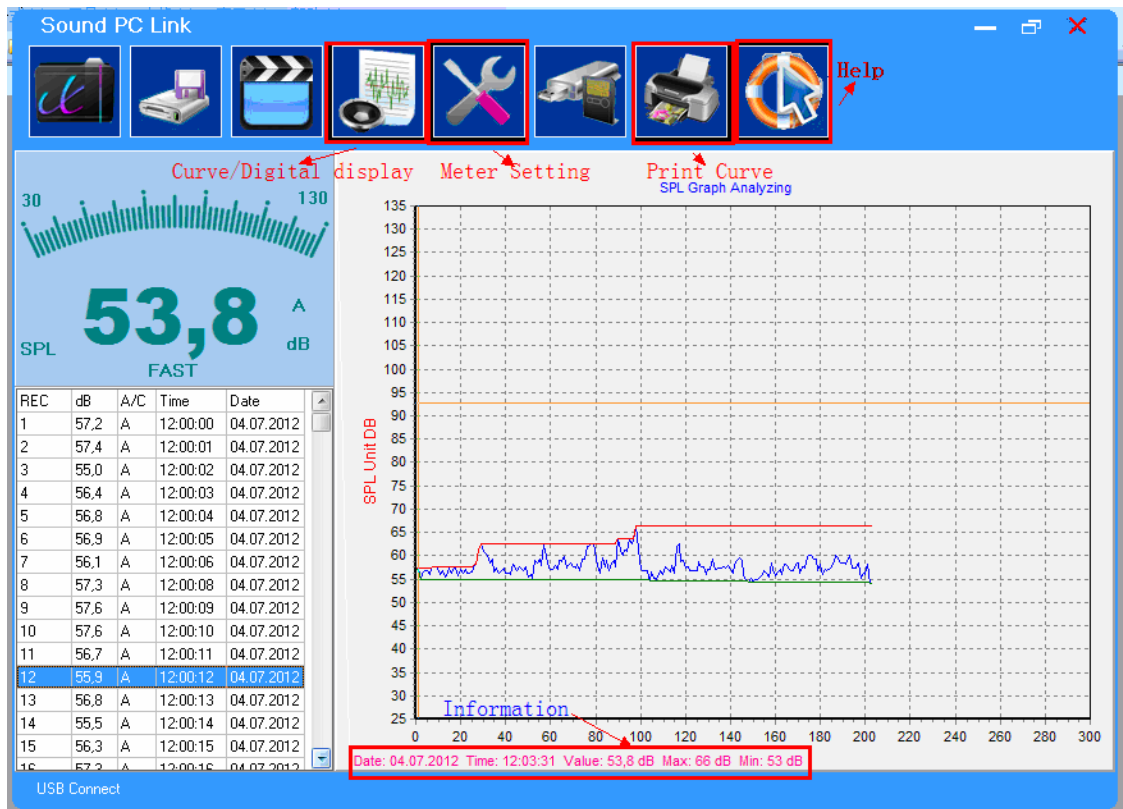
文件(F) 编辑(E) 视图(V) 插入(I) 格式(O) 工具(T) 数据(D) 窗口(W) 帮助(H)

</

Press "open file " to open the desired file



Curve display :



## Digital display





